

Quick setup - Poseidon 1250 Tset

First steps using Poseidon for temperature measuring

Poseidon 1250 Tset package contents:

- Poseidon 1250 device
- Temp-1Wire temperature sensor with RJ12 connector
- Door contact
- 12 V power adaptor
- Printed „Quick setup“
- CD with documentation, manual and Software



1) Poseidon 1250 Tset wiring

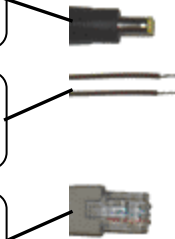
Check DIP switch configuration. See picture for **DIP switch** configuration during device setup (DIP1=Off, DIP2=ON, DIP3=Off, DIP4=Off).



Connect **power adaptor** to power supply and to power supply connector of Poseidon.

Connect cables of door magnetic sensor to pin 1 and 2 of the Port 5 (**Dry contacts**).

Connect Poseidon to Port1 - **Ethernet** (direct cable to LAN Switch, crossed to PC).



Connect Temp-1Wire **temperature sensor** to the Port2 - RJ12 1-Wire sensor bus.



- The green POWER indicator will light up
- If the Ethernet connection is OK, the green LINK indicator will also light up. It will blink during data transfer via Ethernet (Activity indicator)

2) Poseidon configuration using PnEye

- You will find **PN Eye** installation file on supplied CD in `\Poseidon\model 1250\` directory, you can also download the latest version from our website www.HW-group.com, follow the Poseidon 1250 product or PN Eye.
- Install **PN Eye** – follow the instruction of setup wizard
- PnEye icon will be placed on your desktop after successful installation
- Click on **PN Eye** icon to start program



Click on **Find Devices** icon on the first bookmark.



PN Eye will search for devices in your local network. You will recognize Poseidon according to MAC address which is printed on the plate on the bottom part of Poseidon 1140 device.

Click once on MAC address of the device to select it.

IP Address	MAC Address
192.168.1.6	00:0A:59:03:03:29
192.168.1.99	00:0A:59:03:08:29

Now it is necessary to setup network parameters.

Note: Contact your network administrator in case you do not know them

- Set up IP address
- HTTP Port
- Mask of your network
- IP address of your Gateway

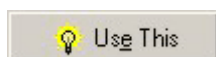
Module IP	HTTP Port
192.168.1.20	: 80
IP Mask	
255.255.255.0	
IP Gateway	
192.168.1.1	
<input type="checkbox"/> Enable DHCP	
<input checked="" type="checkbox"/> Enable TCP setup	

Click **Apply Changes** to save values.

Click **Select device from list** button to select device that PN Eye will operate.

Device IP address and http Port will fulfill automatically in the window next to **Use This** button.

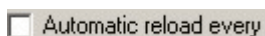
Device IP	HTTP Port
192.168.1.20	: 80



Click **Use This** button to set PN Eye to use selected device. You will be redirected to bookmark with sensor values.

There are presented values of all connected sensors on this bookmark in **Sensors list** section – see the picture.

Click **Read values now** button if you want to read current values of the sensors.



For automatic reload of values in selected period tick **Automatic reload every seconds** box and set period. Program will reload values in selected period and store them in log file.

The screenshot shows the 'Sensors list' section with the following data:

Name	Value	ID	Alarm	Safe range	Status
Binary 1	OFF		Disabled		OK
Binary 2	OFF		Disabled		OK
Binary 3	OFF		Disabled		OK
Sensor	22.6 °C	10496	No	-10 .. 40	OK

The 'Reload values' section shows:

- Automatic reload every 20 seconds
- Waiting to reload 16 seconds... (20% progress bar)
-

Other options include:

- Save values to the logfiles
-
-
-
-

Status bar: Waiting..., No sensor in alarm, 21:22:44

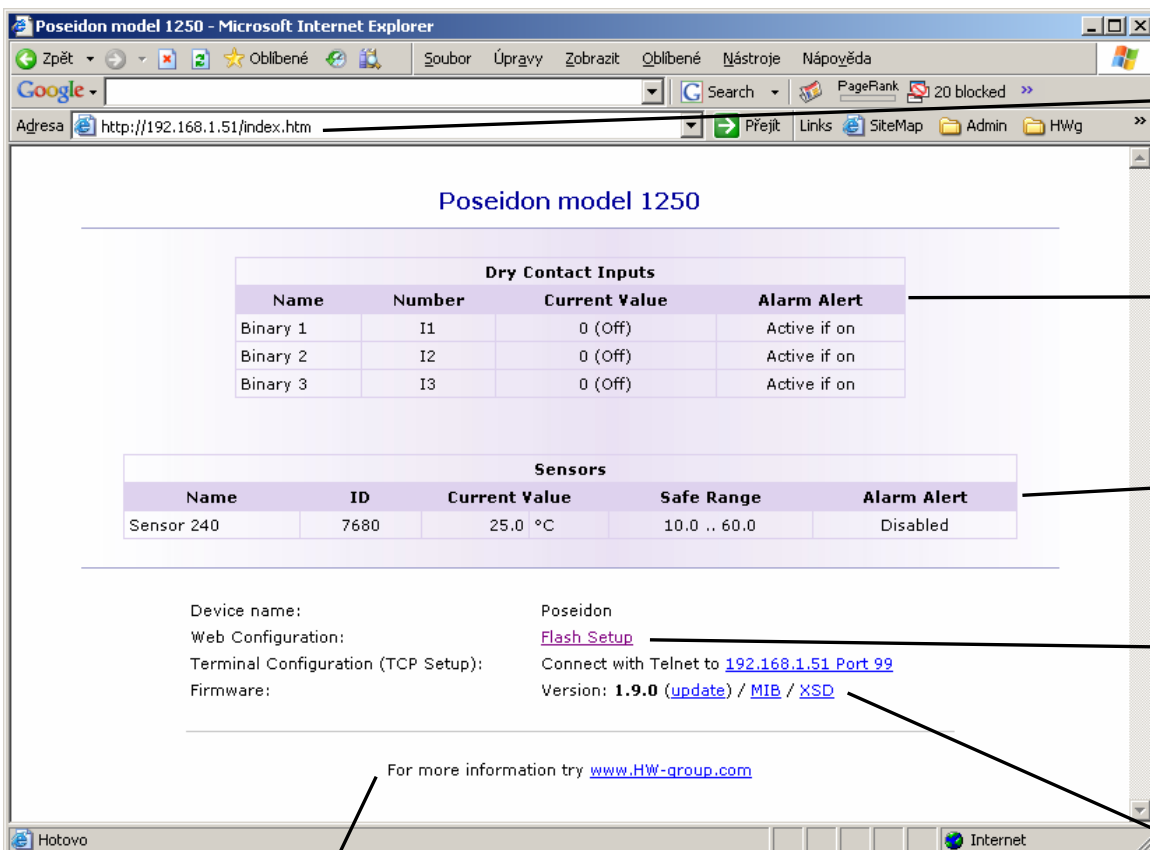
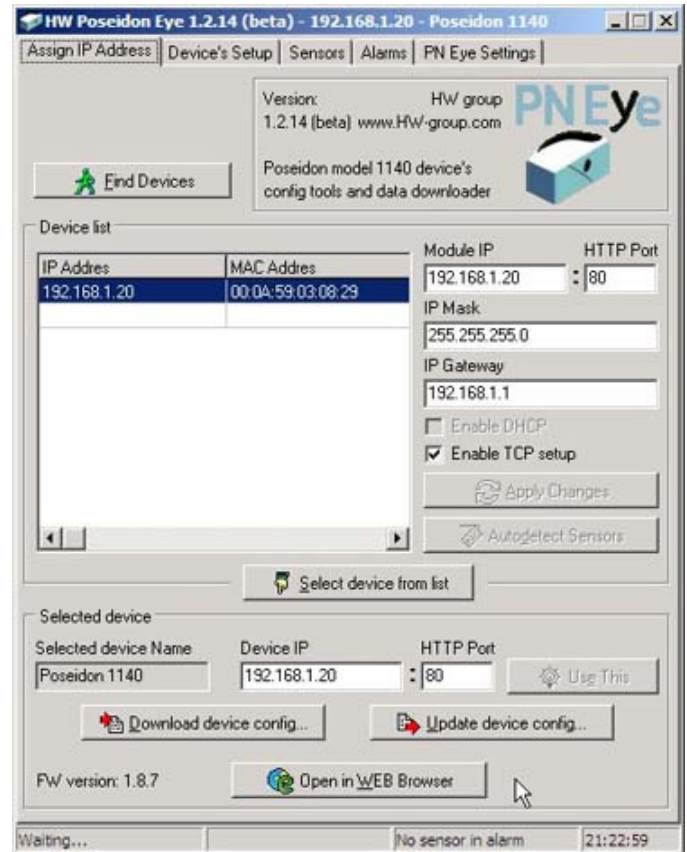
3) Configuration and display of Poseidon via web browser

Click on the first bookmark – „Assign IP Address“ in PN Eye program.

Click on **Open in WEB Browser** button and PN Eye will open your default WEB browser (Internet Explorer, Firefox and others).



Note: You can choose to open the page of the device directly from your web browser.



Configured device IP address.

Status of Dry Contact (Binary) Inputs.

List of connected sensors, current value, alarm status..

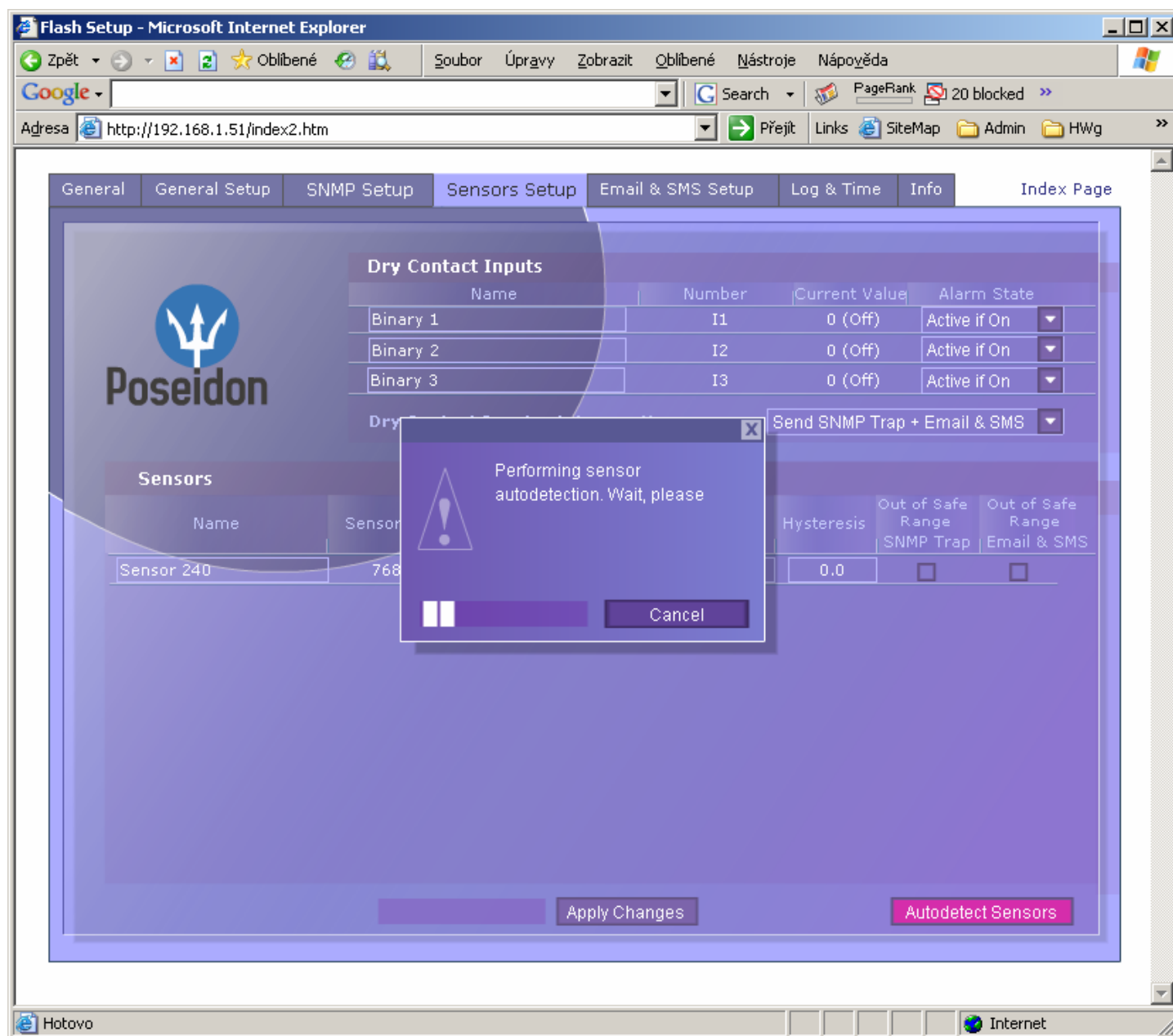
Graphic **Flash Setup**, see following page..

SNMP MIB file, XML description XSD file and FirmWare update over TCP.

Link to supplier or tech. support (can be changed, check the manual).

4) Configuration via Flash Setup

Click on **Graphic Flash SETUP** link on WWW page to open graphic version of setup which requires installed **Macromedia Flash player** module in web browser. You can download latest version from internet or you will find it on the supplied CD: \Poseidon\install flash player 7.msi



Autodetect Sensors: *If you are connecting new sensors, use sensor autodetect function in the Flash setup – Sensors Setup tab.*

Flash Setup allows you to:

- Configure names of sensors and their alarm values („Safe range“).
- Read current values of the sensors, values will reload in set period.
- Configure SNMP parameters (Community names & rights), define recipient to send SNMP Traps and emails to.
- Configure name, password and safe range of IP address.

You can find detailed information in manual or on our website www.HW-group.com.